

SUPER BAT

SS080 Directional Stereo Contact Microphone



Features

- Super-directional: hear only what is inside the target room
- Extremely high sensitivity and gain
- Wide frequency range: up to 8000Hz
- Stereo signal improves target intelligibility and localization
- Supports wide imaging of 10 meters and more
- 3 discrete levels of DSP ambient noise reduction
- Ruggedised sensor withstands high impact forces
- Optional thin, ultra sensitive probe microphone

Applications

- Listening through walls
- Remote monitoring of structure-borne audio signals
- Locating people beneath collapsed buildings (* optional probe microphone)
- Industrial and noisy environments
- Standard outdoor surveillance operations
- Homeland Security
- Suited for use in SWAT, tactical task forces, and container monitoring



SUPER BAT is a high performance device that enables you to listen and record through various surfaces including walls, floors, windows, and doors without the need to be inside the room.

Now you can hear what's happening inside your target surveillance area, while reducing unwanted ambient noise that's produced outside. SUPER BAT solves through-the-wall audio's most serious problems. Our breakthrough directional sensor brings you superior audio performance, and it's easy to use.

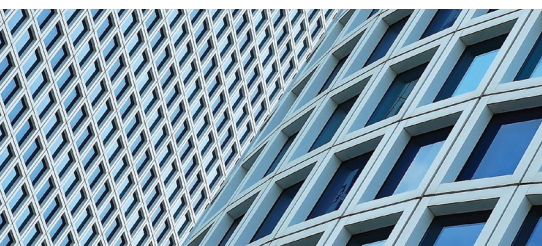
The SUPER BAT includes a built in DSP based Noise Reduction and Directivity functions that increase voice intelligibility in noisy environments or where there is ambient noise (such as air conditioning or traffic noise). The SUPER BAT contact microphone heads are highly sensitive, while at the same time they are extremely robust devices and water resistant up to a depth of 5m. The proprietary super-directional sensors eliminate bothersome speech detected in the listening area during an operation (reducing such masking signals by at least 20dB).

The SUPER BAT system is comprised of two contact microphone heads with cable and reel and the stereo electronics box. The rear panel of the stereo electronics box contains the lemo connectors for connecting the microphones, DC power and the DSP Noise Reduction Control (Adaptive Noise Reduction, Directivity, Thick Wall).

SUPER BAT Ultimate includes a thin, ultra sensitive probe microphone designed especially for life-saving, rescue and hostage situations. The probe microphone is easily pushed through tight spaces giving high fidelity listening.

Technology

The SUPER BAT senses the microscopic vibrations resulting from sounds and noises inside the room and translates them into audio signals. The SUPER BAT is based on unique acoustic technology resulting in high quality stereo sound. ■



Technical Specifications

Intelligibility through concrete wall thickness	Up to 50cm (20")
Frequency response	30 to 8,000Hz
Amplification	Up to 100,000
Self-noise (RMS)	< 3µg
Noise reduction	15dB of noise in the wall +20dB of external noise
Line output impedance	10KOhm
Headphones	32Ohm
Output power to headphones	0.15W
Supply voltage	8 to 15V DC or 4x1.5V AA Battery
Power consumption	<0.5W
Operating temperature	-20 to +60° C (-4 to +140° F)
Storage temperature	-20 to +60° C (-4 to +140° F)
Water resistant	Up to 5m
Cable length	5m (16.4ft) for each channel
MTBF	>100,000 hours
Contact Microphone Head	
Diameter	35mm (1.38")
Height	20mm (0.78")
Weight	16g (0.56 oz) each sensor
Stereo Electronics Box	
Dimensions	H 27mm (1.06") x W 57mm (2.24") x L 110mm (4.33")
Standard Battery Type	Alkaline AA > 8 hours

Product Codes

SUPER BAT SS080 Directional Stereo Contact Microphone - Full Systems

3-299-660 SS080 SUPER BAT Directional Stereo Contact Microphone System with 2 x 5m of 2 x 3mm zip cord optical fiber, stereo electronics box with built-in DSP, audio cable with 3.5mm jack, headphones, 8-12V DC power supply, needle kit (plaster wall needles & butterfly screws), guidance manual and carrying case

3-299-668 SS080 SUPER BAT Ultimate - SuperBAT + push through probe microphone, adapter for wireless transmission, internal recorder (Micro-SD format), 2-16GB, 44.1kHz, 16 bit, no compression > 10 hours- 4 days

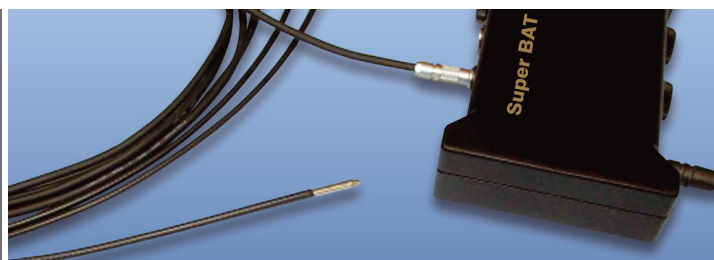
SUPER BAT SS080 Directional Stereo Contact Microphone - Accessories

3-299-649 Extension cable type indoor, 2 x 3mm zip cord (specify length from 10-100m) will withstand bending and stepping on it

3-299-661 Thin, Ultra Sensitive Probe Microphone, probe diameter 3mm, rigid and flexible cable, total length: 5m (3m of semi-rigid probe + 2m of electrical cable)

*Optional thin, ultra sensitive probe microphone

Can be supplied with extended length for life rescue



For further information contact

Winkelmann (UK) Limited
Unit 63, Rowfant Business Centre
Wallage Lane, Rowfant, Near Crawley
West Sussex RH10 4NQ UK

T: +44 (0) 1342 719024
F: +44 (0) 1342 719030
E: sales@winkelmann.co.uk
www.winkelmann.co.uk